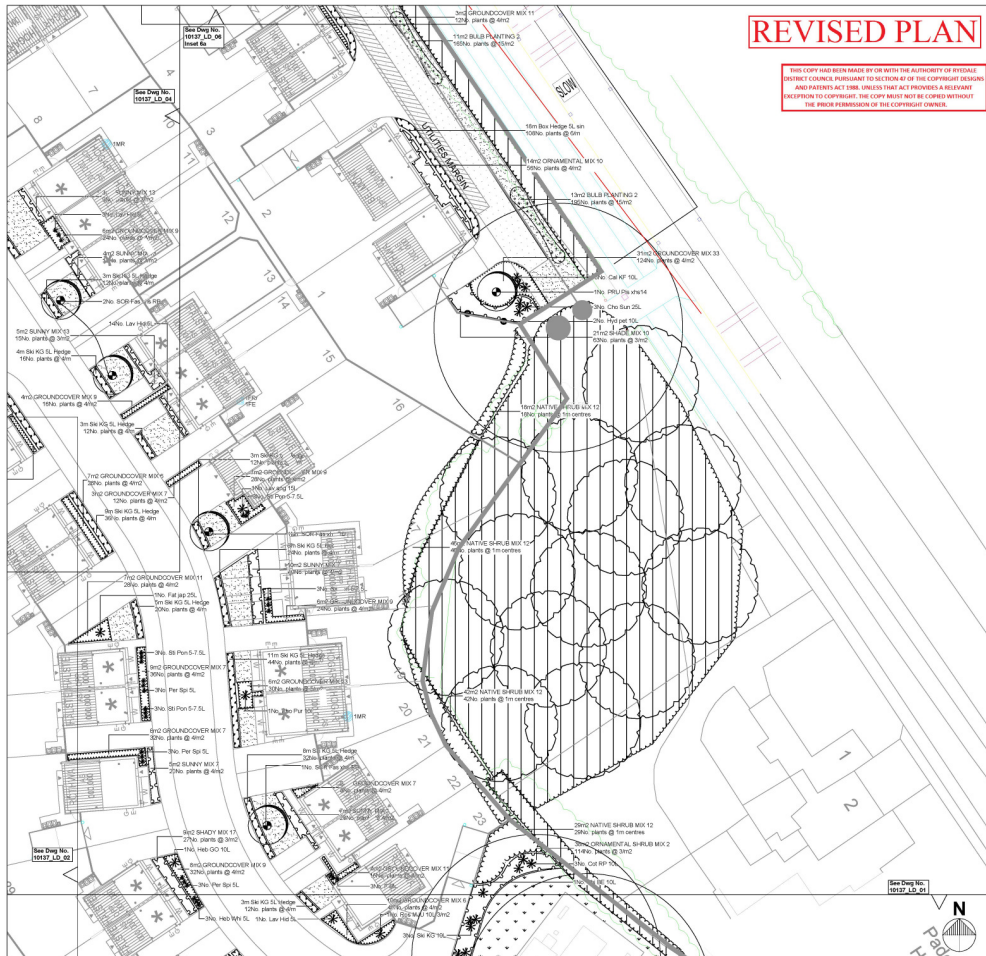


REVISED PLAN

THIS COPY HAS BEEN MADE BY US WITH THE AUTHORITY OF PLYMOUTH DISTRICT COUNCIL PURSUANT TO SECTION 47 OF THE COPYRIGHT DESIGN AND PATENTS ACT 1988. UNLESS THAT ACT PROVIDES A RELEVANT EXCEPTION TO CONTRARY, THIS COPY MUST NOT BE COPIED WITHOUT THE PRIOR PERMISSION OF THE COPYRIGHT OWNER.



KEY

Soft Works

- Proposed Planting Groundcover Mixes
Proposed Planting Hedgerows
Proposed Planting Native / Semi Native Mixes
Proposed Planting Shrubs
Proposed Trees
Proposed Grass Turf
Proposed Grass Areas
Proposed Grass Areas - General
Proposed Grass Areas - Special
Proposed Grass Areas - Ornamental
Proposed Grass Areas - Blended
Proposed Grass Areas - Blended
Proposed Grass Areas - Blended
Proposed Grass Areas - Blended

Ecological Recommendations

- Site holding mounted general purpose bird nest boxes
Site holding mounted bird nest boxes
Site holding mounted bat boxes
Site holding mounted bat boxes
Site holding mounted bat boxes
Site holding mounted bat boxes

Native Planting

- Planting Native Hedgerows
Planting Semi Native/Natural Structural Planting
Proposed Grass/Wildflower Meadow
Proposed Grass/Wildflower Meadow



KEY PLAN (not to scale)

GENERAL NOTES

- Drawing for planning purposes only
- Refer to drawing reference 10137_LD_01 for plant schedule and 10137_LD_02 for code specifications and nomenclature
- Refer to drawing reference 10137_LD_01 for site plan schedule and 10137_LD_02 for code specifications and nomenclature
- Refer to drawing reference 10137_LD_01 for site plan schedule and 10137_LD_02 for code specifications and nomenclature

REVISIONS

Table with 6 columns: REV, DATE, DRAWN, CHECKED, REVISION COMMENT. Contains revision history for the drawing.

DRAWING STATUS: For Planning



Job: Langton Road, Norton
Title: Soft Landscape Proposals - SHEET 3 of 8
Client: HT
Date: Aug 17
Scale: 1:200
Dwg no: 10137_LD_03